

## 37.Christmas Worship

Arr.P.Schaban

$\text{♩} = 112$

5 **A**

9 **B**

13 **C**

17 **D**

21 **E**

25 **F**

29 **G**  $\text{♩} = 104$  7

38 **H**

[illegible]

43

43

47 I



Musical notation for measure 47, first ending. The staff is in treble clef with a key signature of two sharps (F# and C#). The melody consists of eighth notes: D5, E5, F#5, G5, A5, B5, C#6, D6. The first three measures are identical, and the fourth measure starts with a sharp sign before the D5 note.

51

51

54 J

[illegible]

62 K



62 K

[illegible]

70  $\text{♩}=135$   L



74

74

79

**Fine**

84



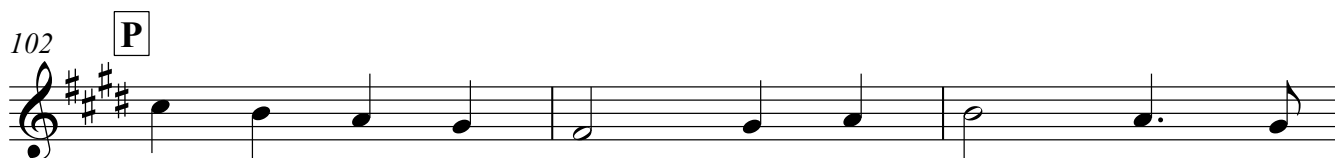
90



94



102



105

